

Costume Design (Version 2)

13

**PUTTIN' ON PRODUCTIONS
SPRING MUSICAL 2017**

Director: Ashley Daniels

Costume Designer: Samantha Vinzon

A NOTE FROM THE COSTUMER...

Hi there!

My name is Sam Vinzon and I am the Costume Designer for POP's Spring Musical "13". I'm am very excited to be working on this production with you all!

Because this is a contemporary story, director Ashley and I have decided that the wardrobe for each character can come largely from the actors' closets themselves.

The following presentation is my "Costume Design" PDF of the visual references for each character. I did my best to make the wardrobe photos specific enough to accurately represent each character's personality, yet general enough to ensure that the outfits would consist of easily acquired garments.

Here's just a couple of things to keep in mind while gathering your clothes:

- Our narrative is set in the Midwest during the Fall season
- Performers going to be dancing in these clothes so make sure they are comfortable enough to allow for movement
- Please avoid big logos or brand names
- You will be lending these clothes to the production for a week, so it'd probably best to not offer clothes that are worn often

Please feel free to contact me at sam.vinzon@gmail.com if you have any questions, comments, or concerns.

Table of CONTENTS

Character Page #

Rabbi 3

Evan 4

“Cheerleader” Clique 7

 Kendra 8

 Lucy 10

 Cassie 12

 Charlotte 13

 Molly 14

Character Page #

“Jock” Clique 15

 Brett 16

 Eddie 18

 Malcolm 20

 Richie 22

 Simon 23

“Nerdy” Clique 24

 Patrice 25

 Archie 28

Rabbi

- Charcoal suit jacket with blue blouse and black slacks or black dress
- Black flats
- Traditional Tallit & yamika with white royal blue color



EVAN

Act 1

- Beat up Converse
- Blue jeans
- Blue "vintage" baseball style T-shirt
- Charcoal colored hoodie with dark grey colored leather jacket over it



EVAN

Act 2

- Beat up Converse
- Blue jeans
- Sky blue Henley
- Charcoal colored hoodie with dark grey colored leather jacket over it



EVAN

Act 2

- Beat up Converse
- Blue jeans
- Sky blue Henley
- Greyish blue Blazer
- Traditional Tallit & yamika with royal blue accents



"CHEERLEADER" clique

- Light blue & purple color theme
- Leggings
- Skirts with tights
- Tanks worn with cardigans
- "Basic" tees
- Sweaters
- Brown boots
- Converse or Keds
- Chokers & "friendship" bracelets
- Hair half up/half down or pulled back with a headband



KENDRA

Act 1

- Lavender & white color palette (as a part of the "cheerleader" clique)
- Flowy lavender blouse
- White leggings
- Neutral colored booties
- Thick headband that matches blouse
- Simple choker



KENDRA

Act 2

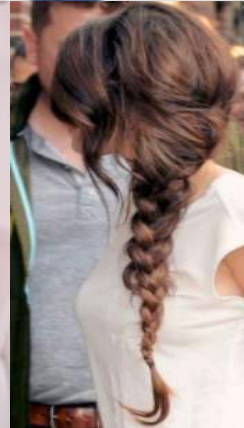
- Lavender color palette (as a variation of the "cheerleader" clique)
- Flowy lavender dress (floral print maybe)
- Loose tan cardigan
- Brown booties
- Thick headband that matches dress
- Simple choker



LUCY

Act 1

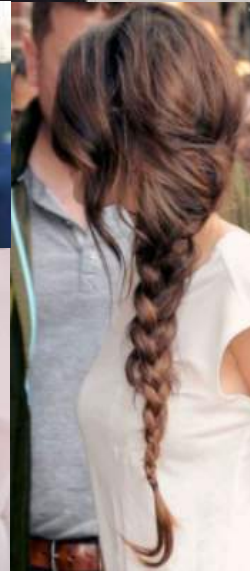
- Indigo color palette (as a variation of the "cheerleader" clique)
- Ringer style tee or light pull over
- Flannel around waist
- Jeggings
- White Converse or Keds
- Velvet choker
- Side braid



LUCY

Act 2

- Indigo color palette (as a variation of the "cheerleader" clique)
- Velvet choker
- Indigo bomber jacket
- Striped T-shirt dress or top
- White Converse or Keds
- Side braid



Cassie

- Light blue skirt with white polka dots
- Crème long sleeve shirt
- Hair pulled back with a headband
- White knee length socks
- Brown boots



CHARLOTTE

- Floral top
- Jean overalls
- Tan combat boots
- Hair in ponytail



Molly

- Mauve loose peplum blouse
- Jeggings or jean capri pants
- White Converse
- Hair half up/half down with purple bow hair clip



"JOCK" clique

- Red & orange color theme
- Hoodies
- Pull-over sweatshirts
- Sneakers, Converse, Nikes
- Athletic attire
- Yoga pants
- Jerseys
- "School pride" clothes



BRETT

Act 1

- Maroon color palette (as a variation of the "jock" clique)
- Faded T-shirt
- Maroon bomber jacket
- Dark grey joggers
- Black Converse



BRETT

Act 2

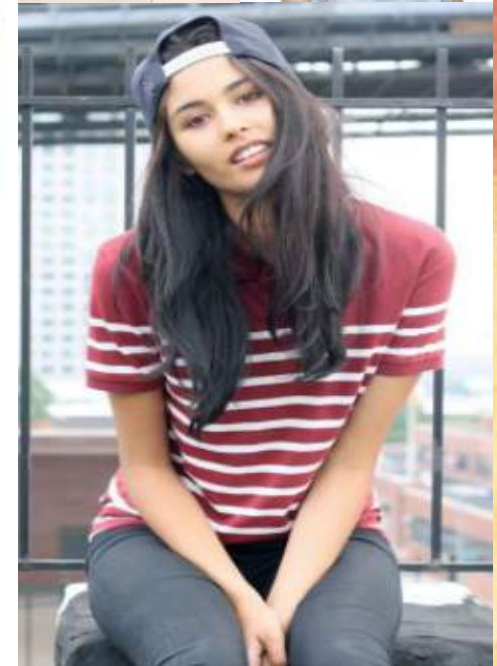
- Maroon color palette (as a variation of the "jock" clique)
- Dark wash jeans
- Patterned pull-over
- Black Converse



Eddie

Act 1

- Red color palette (as a variation of the "jock" clique)
- Backwards hat
- Red striped shirt
- Dark grey or khaki cargo pants
- Old, beat up sneakers or black Converse



Eddie

Act 2

- Red color palette (as a variation of the "jock" clique)
- Backwards hat
- Red and black plaid pants
- Long sleeve
- Black Converse



Malcolm

Act 1

- Maroon color palette (as a variation of the "jock" clique)
- Grey T-shirt with some kind of Spiderman graphic
- Maroon pants
- Clunky sneakers



Malcolm

Act 2

- Maroon color palette (as a variation of the "jock" clique)
- Beanie
- Open red flannel
- Grey T-shirt with some kind of Deadpool graphic
- Maroon pants
- Clunky sneakers



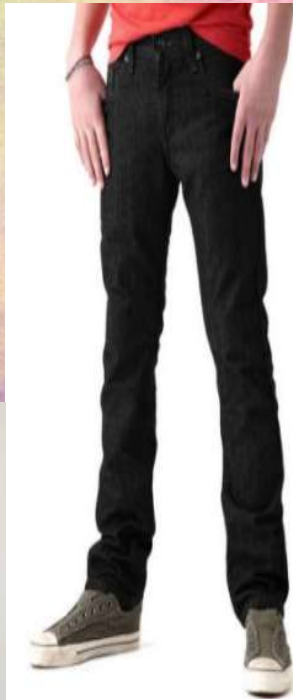
Richie

- Long sleeve polo with thick stripe pattern (color variation doesn't matter as red is one of the colors)
- Khaki cargo shorts
- Clunky sneakers



SIMON

- Long sleeve under a T-shirt with some kind of Star Wars graphic (must have red or orange accents)
- Black jeans
- Converse



"GEEK" clique

- Green & yellow color theme
- Polos
- Striped T-shirts
- Fleece zip-up sweaters
- Plaid button-ups
- Dorky sneakers
- "Mathlete" shirts
- Army print



PATRICE

Act 1

- Yellow color palette (as a variation of the "geek" clique)
- Mustard yellow sweater with white collar under
- Grey flared kids yoga pants
- Clunky, dorky running sneakers
- Hair in two pigtails or braids



PATRICE

Act 2

- Yellow color palette (as a variation of the "geek" clique)
- Mustard yellow dress with white collar under
- Jean jacket over
- Clunky, dorky running sneakers
- Hair in two pigtails or braids



PATRICE

Act 2

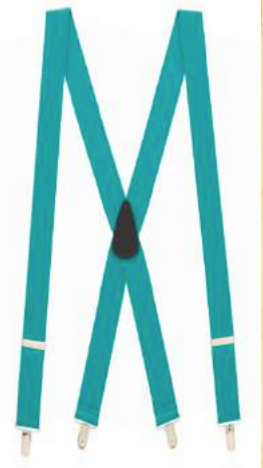
- Yellow color palette (as a variation of the "geek" clique)
- Mustard yellow ringer T-shirt
- Grey patterned capri length yoga pants
- Clunky, dorky running sneakers
- Hair in two pigtails or braids



ARchie

Act 1

- Teal color palette (as a variation of the "geek" clique)
- Grey or khaki pants
- Plaid button up (tucked in)
- Suspenders
- Matching teal shoes



ARchie

Act 2

- Teal color palette (as a variation of the "geek" clique)
- Fedora hat
- Vest
- Teal button up, tucked in
- Nice grey jeans or slacks with belt
- Dress shoes

